



Why should I have my dog on a lead?

Dog owners should keep dogs on leads in public places for public safety, to protect other animals and wildlife, prevent road accidents, manage fouling, and respect people who are fearful, elderly, or have young children, ensuring shared spaces remain pleasant and safe for everyone, not just dog owners.

Leashes ensure owners maintain control, preventing unexpected chases, aggression, or escapes, even in seemingly calm situations.

Please remember, that not all dogs are friendly, some can be anxious or even aggressive, don't necessarily assume that all dog owners want their to interact with others because they may have valid reasons for not doing so.

For Public Safety & Peace of Mind:

- Prevents Attacks: Keeps aggressive or excitable dogs from attacking other dogs, people, or wildlife
- Protects Vulnerable People: Allows those afraid of dogs, allergic, or with young children to use public spaces without fear
- Avoids Accidents: Prevents dogs from running into traffic or causing road incidents
- Reduces Nuisance: Controls barking, jumping, and general chaos, creating a more enjoyable environment for all

Walking Dogs in the dark:

- Prioritise visibility and awareness, using reflective gear, LED lights for both you and your dog, choosing well-lit familiar routes, and keeping your dog leashed to prevent them from getting spooked and running off

For Other Animals & Wildlife:

- Protects Wildlife: Prevents dogs from disturbing or harming deer, birds, and other wildlife, especially during sensitive breeding seasons
- Protects Pets: Stops dogs from harassing or attacking other people's pets, like cats or smaller dogs, even if your dog is friendly

For Responsible Ownership:

- Manages Fouling: Makes it easier to ensure dogs don't foul without the owner noticing, reducing mess and health risks
- Ensures Control: A lead ensures the owner can immediately respond to any situation, keeping the dog at their side as required by law in many areas
- Respects Shared Spaces: Demonstrates respect for community rules and other users, ensuring parks remain accessible and pleasant for everyone

Legal & Community Expectations:

- Legal Requirements: Many areas have laws (like Public Spaces Protection Orders) requiring dogs to be on leads in certain places or if deemed out of control

Additional £71.5m secured to deliver transformative M5 Junction 10 Improvements Scheme - 19 Jan 2026



Gloucestershire County Council is celebrating a major funding boost, following the decision by UK Government to commit to providing an additional £71.5 million towards the transformative M5 Junction 10 Improvements Scheme.

This investment will allow the council to move ahead with vital transport upgrades that will unlock homes, jobs and investment. Completion of the scheme will:

- Enable the delivery of over 20,000 new homes — including over 7,000 that are affordable
- Support the Golden Valley development and the National Cyber Innovation Centre and technology cluster, including the creation of around 12,000 skilled jobs for local people
- Build on the successful delivery of the £33 million Arle Court Transport Hub

Development consent for the scheme was granted by the Secretary of State for Transport in June 2025, marking a major milestone and confirming the strategic importance of the project for the county's transport network and economy.

Cllr Julian Tooke, Cabinet Member for Business, Economic Development, Planning and Infrastructure, said: "Securing this additional Government funding is a turning point for Gloucestershire. The delivery of the M5 Junction 10 Improvements Scheme is a catalyst for transformational growth and opportunity in the region, driving future investment and prosperity. I'm grateful to Homes England and our partners for their support and confidence in this essential infrastructure."

The newly confirmed £71.5m is additional funding from UK Government's Housing Infrastructure Fund, administered by Homes England, and will bridge the gap to deliver the full improvements.

Funding for the scheme had already been secured from a range of sources to date, including contributions from: UK Government's Housing Infrastructure Fund, administered by Homes England; district council Community Infrastructure Levy funding; Gloucestershire County Council; and S106 contributions from developers whose sites will directly benefit from the scheme.

Tewkesbury MP Cameron Thomas said: "Gloucestershire's heritage as a foundation of UK engineering and security makes it an ideal nucleus for growth in both sectors, as we look to meet the challenges of tomorrow. This crucial infrastructure upgrade will ensure not only that we keep skilled professionals in Gloucestershire, but that we are an attractive proposition for those across the country. This welcome government investment is testament to the consistent and joined-up pressure of local campaigners, Gloucestershire County Council and Members of Parliament, which continue to keep Gloucestershire in the government's thinking. I commend everybody involved."

Gloucestershire County Council is leading delivery of the scheme in collaboration with National Highways and other partners. Weather-dependant preparation works began in autumn 2025, to avoid rising costs and keep the project on track. These early site works are being carried out by appointed contractor Galliford Try.

With the additional funding now in place, the council and its partners will finalise delivery arrangements and continue preparation works for the start of the main construction phase in autumn 2026. All the latest information on the M5 Junction 10 Improvements Scheme can be found on the scheme webpage at www.gloucestershire.gov.uk/J10, where you can also sign up to receive updates as the project progresses.



Litter in our community!

The main message of this article respectfully asks people to not litter and deal with waste responsibly but we understand that this message won't reach everyone.

We, of course, realise the majority of residents do not drop litter and are grateful for their help and support in keeping the local neighbourhoods clean and tidy.

There is, sadly, a small minority of selfish individuals who persistently litter our community, with drinks cans, bottles, food wrappings and drug paraphernalia, which is a deeply antisocial act that shows a lack of respect for neighbours, public spaces, communal waste facilities and the environment.

Please consider this:

- Littering is an offence and there are fines for those who are caught, including dog fouling (not picking up after your dog) and fly tipping of illegal waste
- More than two million pieces of litter are dropped in the UK every day, the cost to the taxpayers for street cleaning is over £1 billion a year - this is a cost is passed to council tax payers
- Littering also harms wildlife and the environment - common litter items including fast-food packaging, sweet wrappers, drinks cans, bottles and cigarette butts, food that people drop, whether it is half-eaten burgers, chips or apple cores - can attract pigeons and vermin such as rats
- Litter is unsightly and makes our local areas look untidy and uncared for, including communal waste facilities where waste must be disposed of correctly and responsibly
- Litter does not clean itself away, it can take years for it to degrade or not all
- Research shows litter contributes to further crime and that people feel less safe in areas that are littered
- Please place all litter in a bin or take it home to make our community cleaner for everyone

**PLEASE ACT RESPONSIBLY WHEN DISPOSING OF
YOUR LITTER & WASTE!**

RESPECT YOUR COMMUNITY



E-Scooters - What you need to know

In Tewkesbury Borough, the use of privately owned e-scooters in public is illegal.

This includes Twigworth!

Rental e-scooters are only permitted within the official trial areas, which are currently limited to central Gloucester and central Cheltenham, not Tewkesbury.

Privately Owned E-scooters

It is illegal to use a privately owned e-scooter on public roads, pavements, cycle paths, and parks in the UK.

If you own an e-scooter, you can only use it in on private land, such as in a garden but you must have the permission of the landowner to do so.

It's not currently possible to get insurance for privately owned e-scooters; this means it's illegal to use them on the road or in public spaces, such as parks, street pavements, and shopping centres.

If you use a privately-owned e-scooter in public, you risk the vehicle being seized under S.165 Road Traffic Act 1988 for having no insurance.

If you cause serious harm to another person whilst riding an e-scooter/e-motorbike, the incident will be investigated in the same way it would if you were riding a motorcycle or driving a car.



Damage to landscape
areas in Twigworth Green

Caused by anti-social e-
scooters riders

You could also be committing an offence if you're caught:

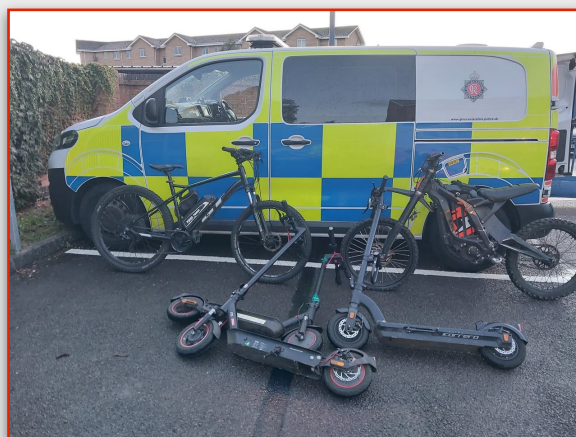
- riding on a pavement: fixed penalty notice and possible £50 fine
- using a mobile phone or other handheld mobile device while riding: £200 and six penalty points
- riding through red lights: fixed penalty notice, £100 fine and possible penalty points
- drink driving: the same as if you were driving a car, you could face court imposed fines, a driving ban and possible imprisonment

If you're using an e-scooter/e-motorbike in public in an antisocial manner, you can also risk the e-scooter/e-motorbike being seized under [section 59 of the Police Reform Act](#).

Drones are being used more regularly by police in Gloucestershire to help confiscate illegal e-bikes and e-scooters.

The drone unit gives the constabulary a tactical aerial advantage which they wouldn't have otherwise – helicopters are used only for the most serious crimes.

Officers took 15 illegal e-bikes and e-scooters off the streets in Cheltenham and 33 in Gloucester in a recent operation.



Have your say on Gloucestershire Fire and Rescue Service's Community Risk Management Plan



Gloucestershire Fire and Rescue Service (GFRS) is asking residents to help shape its future by sharing views on its new draft Community Risk Management Plan (CRMP).

A CRMP is a vital document that sets out how the Service will identify and manage risks in local communities. It's a legal requirement and ensures resources are targeted where they're needed most. The plan takes national guidance and local priorities and turns them into a clear strategy for delivering services over the next four years.



The new CRMP, which will run from 2026-2030, will help GFRS respond to major challenges, including:

- Recommendations from His Majesty's Inspectorate of Constabulary and Fire and Rescue Services (HMICFRS) to drive improvement.
- Adopting national operational recommendations, for example learning from the Grenfell Tower and Manchester arena tragedies and making changes to how the Service operates.
- Continuing to make cultural improvements following an independent review in 2024, to create a Service that is inclusive and values-driven.
- Making sure the Service is run as efficiently as possible whilst ensuring it remains an effective fire and rescue service, amid ongoing pressure on public sector spending.
- The growing impact of climate change, including flooding and wildfires.

GFRS now wants to hear from the public to make sure the plan reflects the needs of the communities it serves. The consultation focuses on its aims, objectives, and key questions about fire cover.

Public consultation has been launched today, Wednesday 24 December, and runs until Sunday 8 February.

The consultation survey is available online and in hard copy.

For more information and to take part, please visit: [Gloucestershire Fire and Rescue Service Draft Community Risk Management Plan 2026-2030 for Public Consultation | Have Your Say Gloucestershire](#)

Feedback will be reviewed and used to shape the final plan, which will go to cabinet for approval in spring 2026.

Mark Preece, Chief Fire Officer, said: "Our Service is here to protect people and places across Gloucestershire, and this plan sets out how we'll do that and continue our improvement journey. We face new challenges, from climate change to national safety recommendations, and we need to adapt. We want to make sure it reflects what matters to you. Please take a few minutes to share your views – together we can create a service that's strong, responsive, and ready for the future."

Cllr Paul Hodgkinson, cabinet member with responsibility for the Fire and Rescue Service at Gloucestershire County Council, said: "This plan is about making sure Gloucestershire Fire and Rescue Service continues to improve and deliver the best possible service for our communities. We've listened to staff and partners, and now we want to hear from you. Your views will help shape how the Service tackles risks and challenges in the years ahead. Please get involved and have your say, as it really does make a difference."

Rare coin thief caught after going on the run!

A man who was part of an elaborate plot to steal £500,000 worth of rare coins has been caught and jailed - almost a year after he was sentenced.

Clinton Bowen, of Ironbridge Road, Twigworth in Gloucestershire, was part of a gang who met with a coin dealer by posing as sellers of a private collection, then placed a tracker on his car to trace his address.

The group of four burgled the dealer's Northamptonshire house two weeks later while he and his wife slept upstairs, taking the coins and stabbing the man in the leg when he tried to stop their stolen getaway car.



Bowen was tried in February 2025 at Gloucester Crown Court but absconded on the penultimate day of the process, and was found in Cheltenham on Sunday.

He appeared at the same court during January, where the seven-and-a-half year sentence given to him in his absence was confirmed.

The 44-year-old also received an additional two-months sentence for breaching his bail.

The court heard he was originally arrested after the victim of the coin burglary managed to memorise the gang's number plate, allowing Northamptonshire Police to track him down.

After he disappeared, police initially believed he had fled to Spain.

Matty Edwards **BBC News** West of England

Next Parish Council Meeting

Thursday 5th March @ 19:00 - 21:00

Down Hatherley Village Hall

This meeting is open to the public if you wish to hear what's going on in and around Twigworth or to raise any issues or ideas.

Attending the March meeting:

- * Potential school academy trust to discuss the needs, priorities and aspirations of the local community, to speak in the public session
- * Local Neighbourhood Police Team

Local Issues

The following issues have been brought to the attention of the Parish Council and are currently being investigated:

- ◆ Littering around Twigworth Green and The Local Centre
- ◆ E-Scooters being used illegally in public places
- ◆ Vehicles speeding on Ironbridge & Apley Roads
- ◆ Outstanding Vistry development issues around Twigworth Green
- ◆ Dog fouling around footpaths and verges
- ◆ Vistry have started replanting the dead, dying or broken tree saplings around Twigworth Green