



TWIGWORTH NEWS

Community updates, events, road notices & village news!

Serious Concerns Raised Following Child Injured on A38 Twigworth

Residents across Twigworth and neighbouring parishes have been left deeply concerned following recent reports that a child was struck by a car on the A38 Tewkesbury Road on 6 May 2026 and taken to hospital.

While the full circumstances surrounding the incident are not yet known, local Parish Councils have for some time been calling for reduced speed limits, safer pedestrian crossing points, and improved road safety measures along this increasingly dangerous stretch of the A38.

Our thoughts are with the child and their family at this difficult time. We sincerely hope for a swift recovery and that the injuries sustained are not serious.

Sadly, many residents will say this incident comes as no surprise.

People living in Twigworth hear it every day and witness it regularly — speeding traffic, dangerous overtaking, near misses, and pedestrians attempting to cross one of the busiest roads in the area with very little protection.

Residents are now asking: how many more accidents or near misses must communities endure before meaningful action is finally taken?

Children walking to bus stops, elderly residents, parents with prams, dog walkers, cyclists and local families are all placed at risk simply trying to move safely through their own village.

Over recent years, Twigworth and surrounding parishes have experienced significant housing growth and increased traffic volumes, yet pedestrian infrastructure has failed to keep pace with that expansion.

In Twigworth, there are no dedicated pedestrian crossing facilities along most of the village, aside from the small refuge islands near the Twigworth Green roundabout.

For many residents living further along the A38, these offer little practical help when trying to safely cross to reach businesses, bus stops, homes, or community facilities.

Pedestrians are often forced to navigate narrow pavements while vehicles continue travelling through the village at speed, despite the recently introduced 40mph limit.

We have also received reports from residents who have experienced drivers dangerously overtaking within the new speed restriction zone itself.

Residents and Parish Councils alike are now calling for Gloucestershire County Council Highways to take urgent and decisive action before another serious incident occurs.

The community deserves safer roads, proper crossing points, effective speed enforcement, and infrastructure that reflects the reality of a growing village — not continued delay while residents risk their safety every day.

The **Parish Council** are equally committed to campaigning for Gloucestershire County Council to reduce the speed limits along this stretch of the A38. Recently, the speed limit from Down Hatherley to Norton was reduced from 50mph to 40mph, and we are now equally committed to reducing the speed limit through Twigworth from 40mph to 30mph, covering the route from Down Hatherley through to Longford.



Stay Informed



For the latest updates, visit our website or follow us on social media



twigworthparishcouncil.com

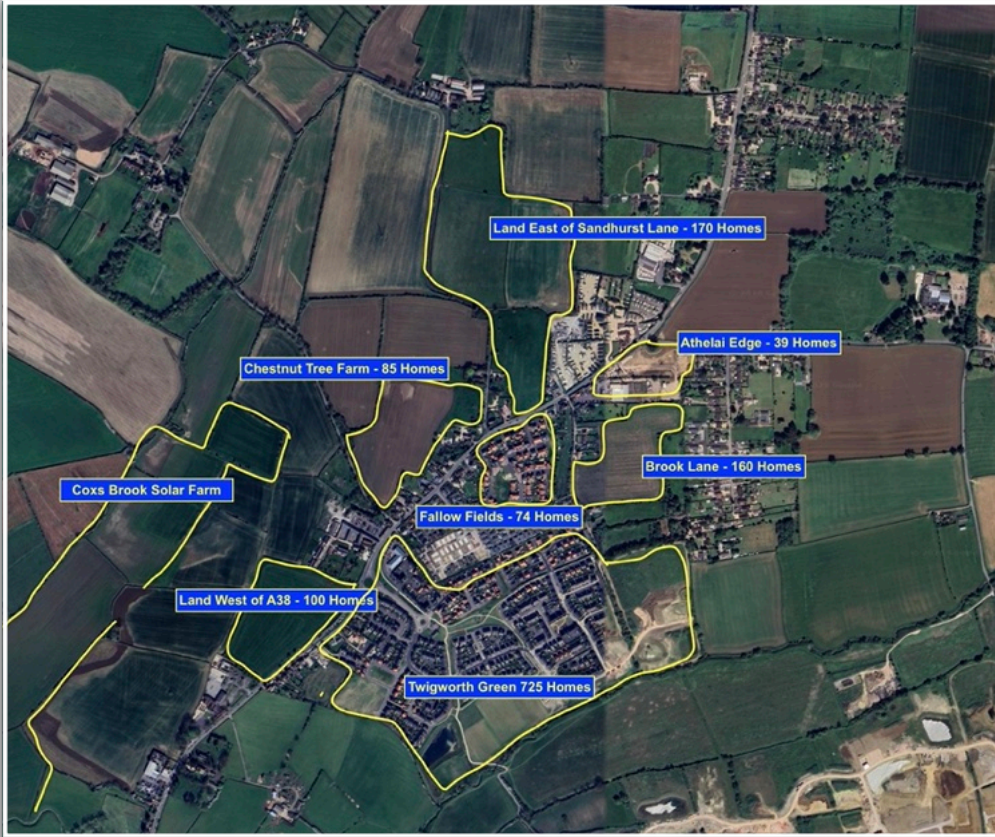


clerk@twigworthparishcouncil.gov.uk



Twigworth at a Crossroads!

Since 2020, the village of Twigworth has experienced significant growth, with the population rising from approximately 360 residents to well over 1,000 by 2026. While change and development are inevitable, many residents are increasingly concerned about the scale and pace of expansion surrounding the village.



Further major developments are now proposed or progressing, including Chestnut Tree Farm, Land East of Sandhurst Lane, Land West of the A38, the proposed solar farm under construction, and the nearby developments at Athelai Edge and Brook Lane. Taken together, these projects represent a substantial increase in housing and infrastructure pressure on an already stretched community.

The key concern for many residents is not simply development itself, but the lack of supporting infrastructure to accompany it.

Despite rapid population growth, very little additional provision has been made for community facilities or public services.

At present, aside from the local centre, a sports field, and a small changing facility offering limited communal space at Twigworth Green, which after 4-years is still not ready for use... there are very few places where residents can gather, socialise, or build a stronger sense of community identity.

Concerns are also growing around increased traffic, pressure on local roads, pedestrian safety, healthcare provision, and the gradual loss of green spaces and village character.

Many feel that the cumulative impact of all these developments is not being properly considered.

Residents recognise the need for new homes and sustainable energy projects, but development must be balanced, proportionate, and properly planned.

Without meaningful investment in infrastructure, there is a real risk that Twigworth loses the very qualities that make it a village community.

What many residents would like to see is a more joined-up approach to planning — one that includes improved roads and transport links, expanded healthcare provision, additional recreational and community spaces, and genuine consultation with local people before further large-scale developments proceed.

The decisions made over the coming years will shape Twigworth for generations.

Growth should support the community, not overwhelm it.

As more proposals come forward, it is vital that residents continue to engage, raise concerns constructively, and ensure that the future of Twigworth remains balanced, sustainable, and community-focused.

Cllr John W Redfern – Annual Report 2025–26

As one of five Twigworth Parish Councillors, following our AGM, I am pleased to present my annual report for what has been another busy and, at times, challenging year.

Much of our work, has centred on the ongoing issues at Twigworth Green, which has required consistent attention, persistence, and collaboration.

While some matters have proved demanding, there have also been rewarding outcomes that demonstrate the value of continued engagement on behalf of our community.

In my role as Community Lead, I have remained responsible for the administration and development of the Parish Council's communications, including the website, Facebook page, and regular newsletter. These platforms are vital in keeping residents informed, and I hope they have been both useful and engaging throughout the year.

A significant focus of my work has been supporting residents of Twigworth Green in addressing a wide range of issues.

This has included establishing and maintaining regular dialogue with the developer, Vistry, and associated stakeholders. Through this engagement, we have sought to hold developers accountable for their obligations, ensuring that concerns are formally recorded and transparently shared via the Parish Council website.

I have also worked to develop constructive communication channels with Gateway Management and their subcontractor, Tony Benger Landscapes, particularly in relation to grounds maintenance. This has included addressing concerns around saplings, hedgerows, and litter management to improve the overall environment for residents.

In addition, I have supported residents and collaborated with external organisations, including Tewkesbury Borough Council, the police, and local housing associations, to address incidents of anti-social behaviour. These situations often require careful coordination and sustained follow-up to achieve appropriate outcomes.

My decision to stand as a Parish Councillor in 2023, was driven by a desire to make a positive difference for the residents of Twigworth, particularly within Twigworth Green, where I am also a resident. Over the past year, I believe that, alongside my fellow Councillors, we have contributed to tangible improvements within the parish, including the provision of dog waste bins, bus shelters, enhancements to trees and landscaping issues at Twigworth Green.

While many residents have been supportive and appreciative of these efforts, there are inevitably challenges in representing a diverse community with differing levels of engagement. It was still nonetheless disappointing that no residents attended our recent AGM & Parish Council Assembly, alongside Borough & County Councillors, however, I still remain committed to serving all residents to the best of my ability.

As I enter my final year in this term as a Parish Councillor, there are significant challenges ahead.

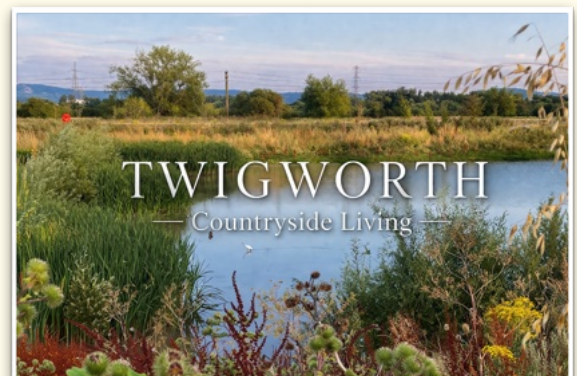
Key priorities will include ensuring that Vistry fulfils its planning commitments, as well as monitoring and responding to the potential new developments at Chestnut Tree Farm, Sandhurst Lane, Brook Lane, Solar Farm and others.

There remains much to be delivered for the residents of Twigworth (4-Year Plan), and I will continue to work closely with fellow Councillors to achieve this.

Next year will see local parish elections within the Tewkesbury Borough, including Twigworth, when residents will once again be able to exercise their democratic right to vote for those who aspire to represent them. It will also provide an opportunity for others, to step forward and serve as a Parish Councillor if they wish.

I would encourage all residents to contact the Parish Council if they require assistance or wish to raise concerns. The Parish Council exists to represent your voice and support the community.

Finally, I would like to extend my sincere thanks to my fellow Councillors, our Parish Clerk, and all residents who have offered their support and engagement over the past year.



Orchard Park



Orchard Park in Twigworth is a residential park home estate and retirement-style community located just off the A38 Tewkesbury Road.

Originally established around 60 years ago on

what was once a working orchard, the development takes its name from that history.

Visitors may notice that the roads within Orchard Park are named after the native apple varieties that were previously grown there.

Today, it is a private residential development of single-storey park homes, similar in style to bungalows, mainly intended for residents aged over 50 and those who are semi-retired.

Although privately owned, a Public Right of Way crosses the site, linking the A38 with Apley Road on Twigworth Green.

There is also a Royal Mail post box located within the development for the convenience of local residents.

Fallow Fields

Just off the A38 Tewkesbury Road, Fallow Fields is an attractive development of up to 74 new homes, designed with families in mind, the community offers more than just modern housing — it creates spaces where residents can relax, connect, and enjoy the outdoors.

At the centre of the development is a well-equipped children's play park featuring a variety of play equipment suitable for all ages, while children climb, swing, and explore, parents and carers can unwind on the conveniently placed benches nearby.

Fallow Fields is also part of a wider family-friendly network across Twigworth, in total, the village now benefits from three dedicated children's play areas, all within easy walking distance for local residents.

Together, these spaces provide plenty of opportunities for outdoor play, recreation, and community life for families across the village.



Twigworth Green - Car Parking

We would kindly ask all residents and visitors to avoid parking on the grassed areas and pavements throughout the development.

Parking in these locations not only damages the grass, much of which is still establishing itself but also prevents the grounds maintenance contractors from carrying out their work effectively.

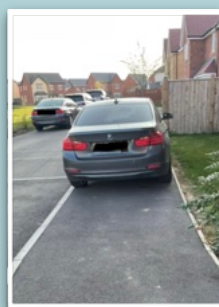


Several areas have already suffered damage or where the grass has struggled to take hold, and we continue to work with Vistry and Gateway to improve and restore these spaces. Unfortunately, parking on these areas makes that process even more challenging.

We would also remind everyone that pavements are intended for pedestrians and should not be used for vehicle parking.

Your cooperation in helping to protect and maintain our shared spaces is greatly appreciated and helps keep the development looking its best for everyone.

Thank you for your understanding and support.



Community Litter Pick at Twigworth Green



Do you care about the environment you live in and want to help keep our community clean and tidy?

We're organising a community litter pick at Twigworth Green and would love for you to join us.

We'll provide:

- Litter picking tools
- High-visibility waistcoats
- Waste bags for collecting litter

All collected litter will be responsibly disposed of after the event. Whether you can spare 30 minutes or stay for the full session, every helping hand makes a difference.



We hope to see you there!

A Residents view on the development of Twigworth - Anon

Since 2020, the population of Twigworth has grown significantly, rising from approximately 360 residents to well over 1,000 by 2026. Should the additional developments proposed in the accompanying plans proceed, the village will experience further substantial expansion. However, despite this rapid growth, the supporting infrastructure remains wholly inadequate, with very little additional provision currently planned to meet the needs of the increasing population.

At present, aside from the local centre, a sports field, and a small changing facility offering limited community space, there are very few places where residents can gather, socialise, or develop a stronger sense of community identity.

One resident summarised these concerns clearly:

“We moved to Twigworth because we were seeking a semi-rural lifestyle with green spaces, a welcoming atmosphere, and a safe environment we could proudly call home. Initially, Twigworth offered exactly that. However, since the development of Twigworth Green, the character of the area has changed considerably.

There has been a noticeable rise in antisocial behaviour, including reports of open drug use, prostitution behind the Cop, shoplifting, littering, and general disorder. Many residents feel these issues are linked to poorly managed social housing, with little visible intervention or enforcement taking place. Consequently, I no longer feel the same pride in the area, nor the sense of safety we once enjoyed.

Unfortunately, many of the concerns raised by residents and the parish council during the original planning process have since become reality.

Flooding remains a major issue. Surface water problems continue and are likely to worsen if further development is approved. Raising the level of new properties does little to protect existing homes and residents from increasing flood risks.

Traffic and road infrastructure have also deteriorated substantially. Although I live approximately one mile from the Queens Head pub, congestion frequently extends beyond my property. Frog Furlong Lane is increasingly being used as a major through-road and is deteriorating rapidly under the volume of traffic. At times, it is difficult and unsafe to leave my driveway or cross the road. Any disruption on the M5 or surrounding routes quickly results in severe gridlock throughout the area, while speeding remains a persistent concern.

There are also ongoing concerns regarding sewerage infrastructure. Tankers are regularly required to service Twigworth Green, highlighting the lack of existing capacity and investment within the system. While this has not yet directly affected my property, it is difficult to understand how the current infrastructure could support further large-scale development.”

Although some positive additions have been made, including local shops and the café, little meaningful investment has been directed toward creating a genuine community. For example, many residents question why the church has not been restored and repurposed as a community facility. It often appears easier and cheaper simply to construct more housing.

If development continues without proper consultation, careful planning, and substantial infrastructure improvements, these existing problems will inevitably worsen. Providing residents with only one week’s notice for a public meeting during the half-term holiday period, when many families are away, is wholly inadequate and undermines meaningful public engagement.

In my view, the area is already overdeveloped, and local residents have accepted more than their fair share of housing growth. For that reason, objections to further expansion should not simply be dismissed as “NIMBYism”.

While I have tried to present these concerns objectively, many residents feel deeply disappointed by both planners and developers. We love our homes and our community, but we cannot simply relocate them elsewhere. This latest proposal would fundamentally alter the surrounding environment, replacing valued green fields with further housing.

The full long-term impact on roads, flooding, sewerage capacity, crime, and the wider community is still unknown. However, based on current experience, many residents believe conditions are likely to deteriorate further if additional development proceeds without significant supporting investment.

I also believe developers should provide enhanced purchase options for residents whose homes and surroundings are fundamentally altered by major developments. This would allow those who choose to remain to do so fully aware of the long-term changes, rather than forcing existing residents to accept substantial imposed alterations to their environment”

Brook Lane - Planning Application 25/00199/CONDIS

Planning Application for approval of details subject to condition 24 (Highway Improvements) of the planning application ref number 21/00976/OUT - Land Parcels 1635 1730 And 2043 Brook Lane Down Hatherley Gloucester Gloucestershire.



Although in the Down Hatherley Parish, this has a major impact on Twigworth Green residents, particularly those living along Apley Road and Sorrel Street, as this is the access route to the new development (160 new homes) across Brook Lane.

Twigworth Parish Council have already submitted their objections, however, any resident may submit their comments prior to the closure of the consultation date of 4th June 2026

Councillor George Porter was invested as Mayor of Tewkesbury Borough at a ceremony on Tuesday, 12 May 2026.

The mayor is the first citizen of the borough, and members of the council nominate a councillor each

year to take on the role.

The mayor chairs council meetings, represents the council at civic events and attends community engagements throughout the year. Cllr Porter represents the Shurdington Ward on the Borough Council, Cllr Jill Smith was invested as Deputy Mayor.

Cllr Porter said: "It's a privilege to take on the role of Mayor of Tewkesbury Borough, and I'm excited to work alongside our residents, champion local projects, and proudly represent our borough. During my term, I particularly want to use this important platform to advocate for and encourage young people in our Borough, recognising their achievements and helping them become greater parts of their communities."

Cllr Porter also went on to recognise Gloucestershire Federation of Young Farmers and Let's Talk Well as his two chosen charities for the year.

Parish AGM & Assembly

Twigworth Parish Council held its Annual General Meeting and Parish Assembly at the beginning of May.

Disappointingly, there were no residents, County Councillor or Borough Councillors in attendance!

Councillors re-elected **Cllr George Sharpley as Chairman** and **Cllr Rick Harris as Vice Chairman** for the forthcoming year.

The council also agreed appointments and representation on a number of outside organisations and working groups.

Appointments confirmed were as follows:

- **Cllr George Sharpley** – Flood Warden and representative on the Cluster of Parish Council Flood Committees
- **Cllr Rick Harris** – Garden Communities, GRCC and GAPTIC; Police and Crime Commissioner Group / Police Liaison representative
- **Cllr Graham Bocking** – Planning Committees and Flood Warden Group, as well as being appointed Council Lead for Planning Matters
- **Cllr John Redfern** – Council Lead for Community Engagement, Website and Social Media

As we begin a new term, we encourage all local residents to support their Parish Council, your views help shape the future of our area and help strengthen our community spirit.

Next year, residents will have an opportunity to choose who they would like to represent them on the Parish Council, as local elections will be taking place across Tewkesbury Borough. If you are interested in becoming a Parish Councillor please let us know, or just submit your nomination when the election date nears, volunteering your services to the community can be rewarding!

Your Parish Council works best when local people get involved. By taking an interest, sharing your views, and engaging with local issues, you can help shape decisions that affect the whole community.

Every voice matters — stay informed, have your say, and help make a positive difference locally.



Norton Court Farm - Open Farm Sunday

We are excited to invite you to Open Farm Sunday at **Norton Court Farm** on **Sunday 7th June**.

Join us from 6am for a special early start at the farm and experience the sights and sounds of a working dairy farm as the day begins. Early risers can take part in a guided dawn chorus walk with local bird enthusiast Shaun Curtis.

This short guided route from the farmyard will explore the mature hedgerows surrounding the farm, giving visitors the chance to discover the wonderful variety of birdlife at one of the most active times of day.

Visitors will also have the opportunity to witness the morning milking routine in the milking parlour and see the calves being fed, while learning more about the day-to-day running of the farm.

From 8am, join the farm team in the yard for free tea and coffee, with breakfast rolls available to purchase. It will be a great opportunity to ask questions and chat about farming, wildlife and life on the farm.

Please book your ticket for this event via the Trybooking link: <https://www.trybooking.com/uk/GLPY> there will be a £5 per ticket charge with all proceeds going to the

Curlew Action Charity who are working to help restore and protect vital breeding grounds locally.

For those who prefer a more relaxed start to their Sunday, our self-guided farm walks will be open from 10.30am, with last entry at 4pm.

Visitors can enjoy a gentle route beginning in the farmyard, winding through our mature orchard and down into our species-rich meadows.

The farmer (and soil enthusiast) Debbie Wilkins and her team will be around to chat about the nature- and soil-friendly farming methods we use across the farm.

Back in the yard, there will be children's craft activities and the chance to meet our model cow, Daisy, who demonstrates how grass is turned into milk.

There will also be a chance to see the afternoon milking at a 3 o'clock.

Tractor and trailer rides will also be running to our new community garden, where you can see the 1000 Seeds Project in full growing and the start of the new community orchard.

There will be small charge of £5 per family group for the trailer rides.

Tea and cake will be available to purchase, and visitors are welcome to bring a picnic to enjoy in the paddock in the farm yard..

Please reserve your free tickets for the self-guided walk and/or tractor and trailer rides using the TryBooking link: <https://www.trybooking.com/uk/GLPY>



Norton Court Farm

Norton,

Tewkesbury,

GL2 9LU



Social Media Posts!

As a social media user myself, I feel it is important to comment on some recent posts that have circulated online. From time to time, personal disagreements and misunderstandings can arise between residents, and I fully understand that these situations may be upsetting and that individuals may seek advice or support.

However, after reading a number of these social media posts, I would respectfully encourage everyone to think carefully before publicly sharing concerns about neighbours or fellow residents online. While social media can be a valuable platform for community news, updates, and support, personal matters are often better addressed privately, calmly, and with mutual respect wherever possible.

We are all members of the same community, and showing kindness, understanding, and consideration towards one another helps maintain a positive and welcoming neighbourhood for everyone.

Please do seek support or guidance when needed, but let us all strive to handle personal situations in a thoughtful, respectful, and mature manner.

Cllr John Redfern

Next Parish Council Meeting

The next meeting of the Twigworth Parish Council will be held on:

Thursday, 2 July 2026

19:00 – 21:00

Down Hatherley Village Hall

All Parish Council meetings are open to the public.

If you would like to address the Council, or simply hear what is happening in and around Twigworth, please do come along — you will be most welcome.



Twigworth Green Neighbourhood Watch

There's been a lot of discussion recently about safety and wellbeing around Twigworth Green, and it's clear that many residents care deeply about our community.



With that in mind, a local Neighbourhood Watch online meeting was held recently to bring people together, share concerns, and explore how we can work collectively to improve things.

Although the session was well publicised, only **two residents** were able to attend. That said, it was still a constructive conversation, with useful ideas and a shared commitment to making a positive difference.

As the Twigworth Green development continues to grow and near completion, it's likely that new challenges will arise. This makes community involvement more important than ever. I'd strongly encourage all residents to support the Twigworth Green Neighbourhood Watch Scheme and our coordinator, **Paul James**, in the great work already underway.

Neighbourhood Watch only works when the community gets involved. It's not just about reporting issues, it's about staying informed, looking out for one another, and building a stronger, more connected neighbourhood.

If you've raised concerns or would like to see improvements, please consider getting involved. Your voice genuinely matters, and the more residents who participate, the more effective we can be.

Further meetings will be in the future and we would love to see more people join. Together, we can help make Twigworth Green a safer, more supportive place for everyone.

The next On-Line meeting will be held:

Tuesday 2nd June @ 19:30

Join online via Google Meet - Video call link:

<https://meet.google.com/hzp-hvjq-mvf>

If you have any questions or ideas, please feel free to get in touch with Paul James

Neighbourhood Watch Co-Ordinator

Email: twigworthgreen.nhw@gmail.com